

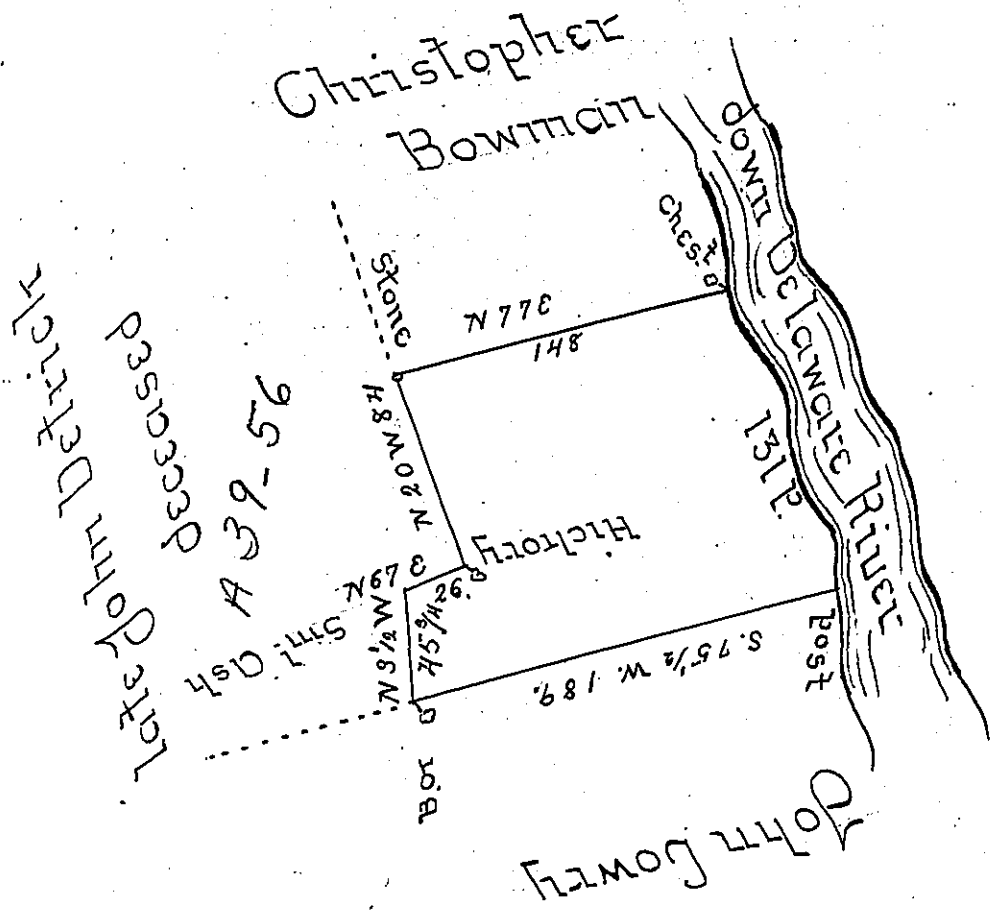
The bearing & distance down Delaware River

are 1.5 37.8 - 26

2.5 18.8 - 80

3.5 14.8 - 25

131



By virtue of a Warrant dated the 5th June 1795 Sur-
 veyed the 15th June 1795 to Benjamin Goodwin
 the above described tract of land situate in Up-
 per Mount Bethel Township Northampton Coun-
 ty containing one hundred and twenty six acres
 and the allowance of six P Cent & ca

R Geo Palmer D.S.

To Daniel Brodhead Esq^r }
 Survey^r General ~ }

IN TESTIMONY that the above is a copy of the original remaining on file in
 the Department of Internal Affairs of Pennsylvania, made
 conformably to an Act of Assembly approved the 16th day of
 February, 1833, I have hereunto set my Hand and caused
 the Seal of said Department to be affixed at Harrisburg,
 this Nineteenth day of December 1904.

James P. Brown
 Secretary of Internal Affairs.